



NARROW-CORRUGATION FARM GRAIN BINS



SM

Brock Grain Systems has a world-wide reputation for providing reliable on-farm storage that allows farmers to market their grain when they are ready. That's because BROCK[®] Bins provide dependable, secure storage season after season. Backed by years of design engineering experience and resourceful manufacturing, Brock has led the way with practical innovations such as sidewalls with narrow (2.66-inch or 68-mm wide) corrugations to better handle weather and load stresses, easy-open access doors that require no tools, and the Eave-Vent Roof-Top Ventilation System that offers uniform ventilation around the entire circumference of the bin. That's why farmers all over the world turn to Brock for grain storage LEADERSHIP THROUGH INNOVATION[®] for the 21st Century.

No matter how sophisticated your grain system becomes in the future, the core of that system will always be the bin. Selecting the right size bin with the capacity you need is easy with Brock's large selection of diameters and eave heights. With a complete line of flat-bottom storage bins as well as hopper-bottom holding bins for both farm and commercial markets, Brock now offers single bin capacities ranging from a modest 750 bushels (25 M³) to one of the world's largest with nearly 1.34 million bushels (44,500 M³).



Industry-leading bin accessories like Brock's LATCH-LOCK[®] Walk-Through Bin Door make grain storage manageable with the least amount of hassle. The one-piece outer door opens wide to latch securely against the side of the bin. The four interlocking inner panels open in sequence from top to bottom with a simple lift of the patented latches. No tools required.



A R E D I F F E R E N T B Y



Brock's field-proven GUARDIAN® Series fans and heaters are designed for maximum efficiency for in-bin drying and aeration. Your local Brock dealer can fit your grain bin with the properly sized fans and heaters to provide the right grain conditioning for your climate conditions. It is an investment that pays off now and for grain storage cycles to come.

Imaginative Design And Engineering Make BROCK® Bins Superior Performers

Whether your on-farm storage consists of a couple of bins with an auger or a whole row of bins with an integrated loading and unloading system, BROCK® Bins are the right choice for the job. On these pages are just a couple of ways BROCK® Bins are DIFFERENT BY DESIGN™ to provide the security of long-term storage.

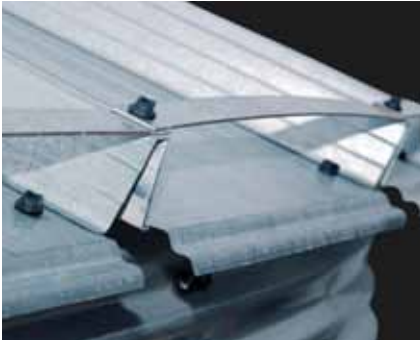
BROCK® Eave-Vent System works better and costs less than conventional roof vents. The patented Eave-Vent System provides more total ventilation and eliminates roof cuts.

High strength Grade #8.2 bin seal bolts are used in all BROCK® narrow-corrugation grain bins. Choose either the JS-500™ rust-resistant coating or rust-proof polypropylene-encapsulated bin assembly bolts.



JS-500 is not owned or licensed by CTB and is the sole property of its respective owner.





“High-rise” roof rib is a full 3 inches (76 mm) tall and utilizes Brock’s strength-giving 2-step rib design. Brock’s innovative **Eave Tension Straps** offer the highest farm bin peak load capacities available, up to 8,000 pounds (3,600 kg) with a ground snow load rating of 30 pounds per square foot (146 kg per square meter).

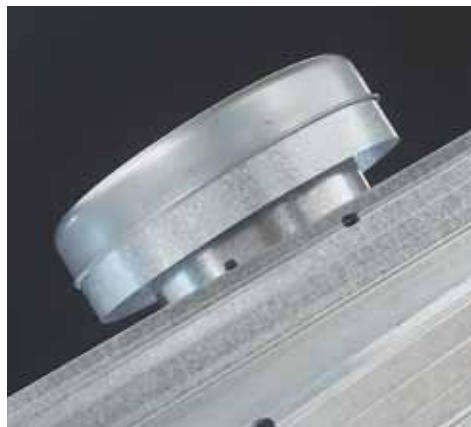


Every roof is supplied with a large **manhole** that is “obround” for easy entry and exit. Its cover has heavy hinges and a strong, rotating latch.

Bin anchor system securely fastens bin to foundation and helps prevent sidewall shifting that could break the seal and cause leakage.



Giant 40-inch (1016-mm) fill hole features a rigid 24-inch (610-mm) diameter center ring to accommodate most auxiliary equipment.



Gravity roof ventilators provide free air movement into the bin. Round mushroom-style (shown) and elbow-style vents are available.



Optional sidewall ladders (right) and **BROCK SHUR-STEP® Bin Stairs** (above), as well as safety cages and rest platforms, conform to OSHA standards and are fabricated from galvanized steel for long-lasting service.



Ladder Bracket offers ample space between rungs and bin sidewall for a secure footing.



Optional Ladder Security Door helps to restrict unauthorized access to grain bin ladder.



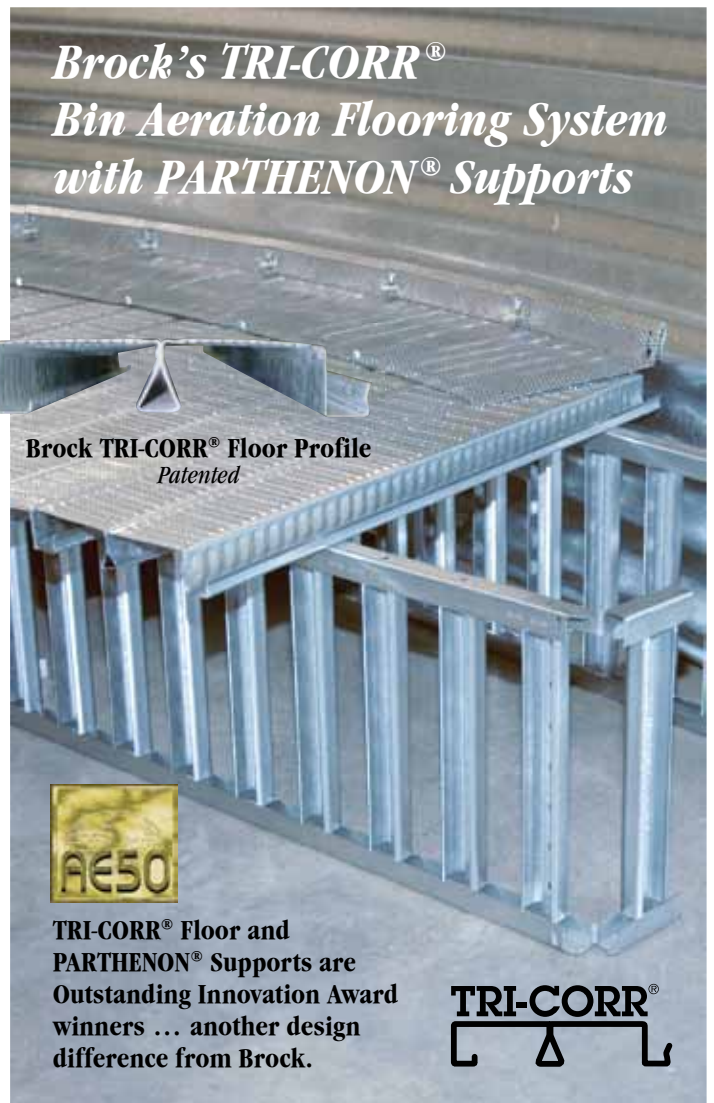
Revolutionary Bin Floor

The revolutionary design of Brock's unique TRI-CORR® Bin Aeration Flooring System gives it remarkable strength. Plus, it includes the best features of Brock's popular aeration floors to provide ample, even air distribution and to allow easy bin clean-out.

The innovative Brock TRI-CORR Floor System can be used in bins ranging in diameters from 12 to 90 feet (3.7 to 27.4 m) and with eave heights up to 100 feet (30.5 m). Brock named the floor TRI-CORR because of its distinctive triangle-shaped center leg and its strength-providing corrugations on the floor's surface and legs for added stability and long life. It's just another way Brock is DIFFERENT BY DESIGN.™

Plus Advanced Floor Support

- ◆ The unique Brock PARTHENON® Floor Support System offers a superior load-bearing capacity complementing the strength of the TRI-CORR® Aeration Flooring.
- ◆ PARTHENON Supports use a simple-to-install non-staggered arrangement and easily lock together to eliminate movement.
- ◆ Brock PARTHENON Supports provide a choice of 13¾- or 18½-inch (349- or 470-mm) floor heights for grain drying and aeration. The low PARTHENON Support has a 12⅞-inch (308-mm) floor clearance to allow for 10-inch (254-mm) diameter unloading systems.
- ◆ The patented combination of Brock TRI-CORR Floor Systems installed with PARTHENON Supports carries a five-year warranty. TRI-CORR or PARTHENON components installed separately carry a one-year warranty.



An Innovative Bin Unloading System

Brock's HARVEST-TIME® Power Sweep can remain in the bin even when the bin is full of grain – saves time and avoids the hassle of removing and re-installing the sweep.



Optional WELL-GARD® Discharge Guard (patent pending) can be added to the HARVEST-TIME® Power Sweep to help limit bridging or blocking of center well opening.

Brock's HARVEST-TIME® Bin Unloading System is a "two for one" system. This means that you get an under floor tube and flight or u-trough conveyor combined with a floor sweep – all economically driven by a single electric motor. You can:

- ◆ Purchase the HARVEST-TIME Unloader and Power Sweep combination and get a smooth-working system that can be operated from outside the bin.
- ◆ Buy only the HARVEST-TIME Unloader and use it with a center pivot to connect to an already existing portable sweep.



Brock's 10-inch (254-mm) U-Trough Auger option offers up to 7,800 bushels (198 metric tons) per hour capacity.

SPECIFICATIONS

This is a sampling of the many narrow-corrugation (2.66-inch/68-mm) sidewall bin sizes Brock offers. Wide-corrugation (4-inch/102-mm) sidewall bins are also available.

Diameter	Model Number	Capacity With Drying or Aeration Floor						Eave Height		Fill Height	
		High Floor		Low Floor		Maximum Capacity*		Feet/Inches	Meters	Feet/Inches	Meters
		Bushels	M ³	Bushels	M ³	Bushels	M ³				
15 FT. (4.6 M)	7-01507	2752	91	2811	91	2980	99	18'-10"	5.74	22'-7"	6.88
	7-01509	3544	118	3601	118	3772	125	24'-2"	7.37	27'-11"	8.51
	7-01510	3939	131	3998	131	4167	138	26'-10"	8.18	30'-7"	9.32
	7-01512	4731	157	4790	157	4959	165	32'-2"	9.80	35'-11"	10.95
18 FT. (5.5 M)	7-01807	4020	134	4104	134	4349	145	18'-10"	5.74	23'-6"	7.16
	7-01809	5161	172	5244	172	5489	182	24'-2"	7.37	28'-10"	8.79
	7-01810	5731	190	5815	191	6058	201	26'-10"	8.18	31'-6"	9.60
	7-01812	6872	228	6956	228	7200	239	32'-2"	9.80	36'-10"	11.23
21 FT. (6.4 M)	7-02107	5552	185	5664	185	5998	199	18'-10"	5.74	24'-4"	7.42
	7-02109	7104	236	7218	236	7551	251	24'-2"	7.37	29'-8"	9.04
	7-02110	7881	262	7995	262	8327	277	26'-10"	8.18	32'-4"	9.86
	7-02112	9434	314	9548	314	9881	328	32'-2"	9.80	37'-8"	11.48
24 FT. (7.3 M)	7-02407	7353	244	7501	244	7937	264	18'-10"	5.74	25'-2"	7.67
	7-02409	9381	312	9531	312	9966	331	24'-2"	7.37	30'-6"	9.30
	7-02410	10396	346	10545	346	10980	365	26'-10"	8.18	33'-2"	10.11
	7-02412	12426	413	12574	413	13010	432	32'-2"	9.80	38'-6"	11.73
27 FT. (8.2 M)	7-02707	9433	314	9622	314	10172	338	18'-10"	5.74	26'-1"	7.95
	7-02709	12003	399	12190	399	12741	424	24'-2"	7.37	31'-5"	9.58
	7-02710	13287	442	13475	442	14025	466	26'-10"	8.18	34'-1"	10.39
	7-02712	15856	527	16045	527	16595	552	32'-2"	9.80	39'-5"	12.01
30 FT. (9.1 M)	7-03007	11806	392	12038	393	12718	423	18'-10"	5.74	26'-11"	8.20
	7-03009	14978	498	15210	498	15890	528	24'-2"	7.37	32'-3"	9.83
	7-03010	16565	551	16796	551	17476	581	26'-10"	8.18	34'-11"	10.64
	7-03012	19737	656	19969	656	20648	686	32'-2"	9.80	40'-3"	12.27
33 FT. (10.1 M)	7-03307	14477	481	14758	481	15580	518	18'-10"	5.74	27'-9"	8.46
	7-03309	18316	609	18597	609	19420	646	24'-2"	7.37	33'-1"	10.08
	7-03310	20236	673	20517	673	21339	709	26'-10"	8.18	35'-9"	10.90
	7-03312	24074	800	24355	801	25178	837	32'-2"	9.80	41'-1"	12.52
36 FT. (11.0 M)	7-03313	25994	864	26275	864	27097	901	34'-10"	10.62	43'-9"	13.34
	7-03607	17458	580	17793	580	18771	624	18'-10"	5.74	28'-8"	8.74
	7-03609	22026	732	22361	732	23340	776	24'-2"	7.37	34'-0"	10.36
	7-03610	24311	808	24645	808	25624	852	26'-10"	8.18	36'-8"	11.18
42 FT. (12.8 M)	7-03612	28880	960	29214	960	30194	1004	32'-2"	9.80	42'-0"	12.80
	7-03613	31164	1036	31498	1036	32479	1080	34'-10"	10.62	44'-8"	13.61
	7-04207	24383	811	24837	811	26170	870	18'-10"	5.74	30'-4"	9.25
	7-04209	30602	1017	31057	1018	32391	1077	24'-2"	7.37	35'-8"	10.87
	7-04210	33713	1121	34169	1121	35501	1180	26'-10"	8.18	38'-4"	11.68
48 FT. (14.6 M)	7-04212	39933	1327	40388	1328	41721	1387	32'-2"	9.80	43'-8"	13.31
	7-04213	43043	1431	43499	1431	44831	1490	34'-10"	10.62	46'-4"	14.12
	7-04807	32656	1086	33251	1086	34992	1163	18'-10"	5.74	32'-1"	9.78
	7-04809	40782	1356	41377	1356	43118	1433	24'-2"	7.37	37'-5"	11.40
	7-04810	44845	1491	45440	1491	47180	1568	26'-10"	8.18	40'-1"	12.22
54 FT. (16.5 M)	7-04812	52970	1761	53565	1761	55306	1839	32'-2"	9.80	45'-5"	13.84
	7-04813	57033	1896	57628	1897	59369	1974	34'-10"	10.62	48'-1"	14.66
	75-05407	42353	1408	43105	1408	45309	1506	18'-10"	5.74	32'-10"	10.01
	75-05409	52638	1750	53391	1750	55594	1848	24'-2"	7.37	38'-2"	11.63
54 FT. (16.5 M)	75-05410	57780	1921	58533	1921	60737	2019	26'-10"	8.18	40'-10"	12.45
	75-05411	62922	2092	63675	2092	65879	2190	29'-6"	8.99	43'-6"	13.26

*Maximum Capacity for a bin allows for grain to be at the normal (28-degree) angle of repose, starting one inch (25 mm) below the eave. The grain capacities listed are based on ASAE Standard: ASAE S413, with a compaction factor of 6%. Standard farm bin roof peak capacity for Brock's 4-panel roof is up to 8,000 pounds (3,600 kg) depending on bin diameter. Rating is based on ground snow loads of 30 pounds per square foot (146 kg per square meter). In the pursuit of LEADERSHIP THROUGH INNOVATION®, we reserve the right to change specifications without prior notice.

Because you will customize your grain storage system to your unique needs, not all potentially dangerous or harmful situations can be identified by Brock Grain Systems at the time the bin components and accessories are manufactured. Therefore, it is essential that you think safety first and pay close attention to all possible hazards within your storage systems.



Brock Grain Systems
Chore-Time Brock International
 Divisions of CTB, Inc.

Milford, IN • Kansas City, MO • Frankfort, IN
 Phone: 574.658.4191 or +1.574.658.9323 (International)
 Internet: www.brockgrain.com or www.ctbworld.com
 E-mail: brock@brockgrain.com

BR-1933/0910