

FLAT BOTTOM LOW PROFILE CONVEYORS

Head Features:

- Computer aided modular bolt together design
- CNC manufactured
- 3.45-4.20-5.21 mm thickness standard galvanized construction
- Heavy duty pillow block bearings
- Heavy duty drive sprocket
- Removable inspection cover
- Dust seals

Trough Features:

- Computer aided modular bolt together design
- CNC manufactured
- 3.45 mm thickness galvanized sides
- 3.45-4.20-5.21 mm thickness galvanized bottoms available
- UHMW return rollers
- Pre-assembled trunk sections
- Optional abrasion resistant steel liners for bottom and sides

Tail Features:

- Computer aided modular bolt together design
- CNC manufactured
- 3.45-4.20-5.21 mm thickness standard galvanized construction
- Heavy duty pillow block bearings
- Heavy duty sprocket
- Acme screw slack adjusters
- Removable inspection covers
- Dust seals

FLAT BOTTOM LOW PROFILE CONVEYORS



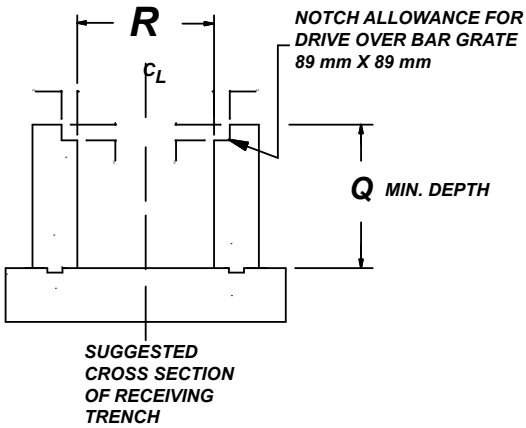
MTPH	MODEL	RPM	MPS
25	GLD-09x9	37	0.325
38	GLD-09x9	55	0.483
51	GLD-09x9	74	0.650
63	GLD-09x9	92	0.813
76	GLD-09x9	109	0.960
76	GLD-13x11	49	0.538
101	GLD-13x11	65	0.716
126	GLD-13x11	81	0.894
139	GLD-16x11	70	0.782
152	GLD-16x11	76	0.894
165	GLD-16x11	81	0.919
177	GLD-16x11	88	0.991

Capacities are based on #2 dry corn.

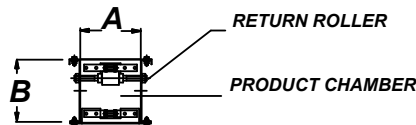
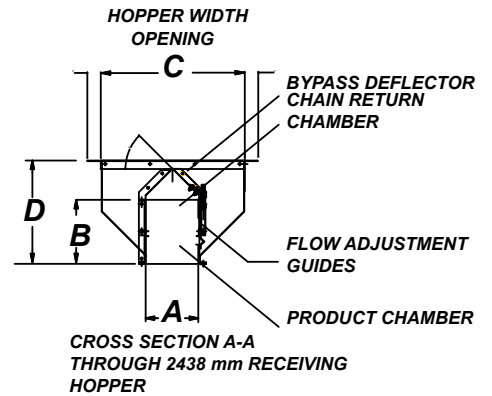
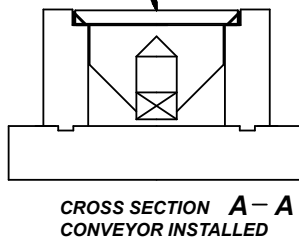
	9X9	13X11	16X11
A	2286	3302	3302
B	2286	2794	2794
C	7874	7874	7874
D	6478	6478	6478
E	2350	2858	2858
F	6096	6096	6096
G	2286	1524	2286
H	2286	2540	3048
J	3302	4064	4064
L	4826	5080	5080
M	889	889	889
N	9144	9144	9144
P	5080	5080	5080
Q	7620	7620	7620
R	8128	8128	8128

Dimensions (shown in millimeters) are nominal and subject to change.

INSIDE CONCRETE TRENCH (HOLD)



WELDED SECTIONS OF DRIVE OVER BARS INSERT INTO NOTCHED TRENCH OPENING ABOVE RECEIVING HOPPER



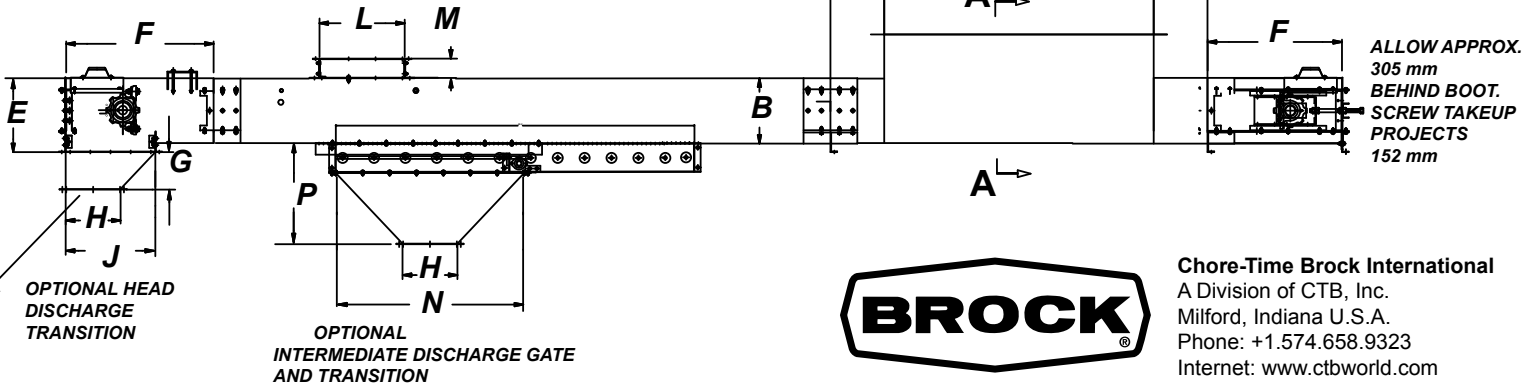
OPTIONAL RECEIVING HOPPER 2438 mm
ALSO 3759 mm & 3658 mm LENGTHS
AVAILABLE

HEAD SECTION R/H OR L/H DRIVE OPTIONS

OPTIONAL TOP INLET

305 mm 3438 mm 305 mm

BOOT SECTION



Chore-Time Brock International
A Division of CTB, Inc.
Milford, Indiana U.S.A.
Phone: +1.574.658.9323
Internet: www.ctbworld.com
E-Mail: world@ctbworld.com